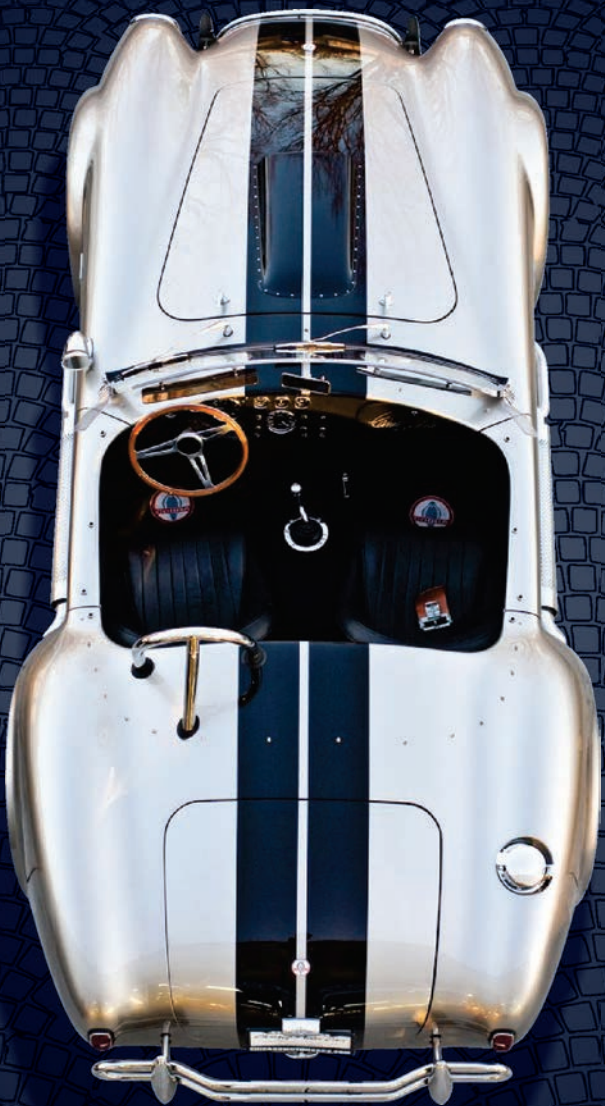


the **Villas**
waterfall



WATERFALL

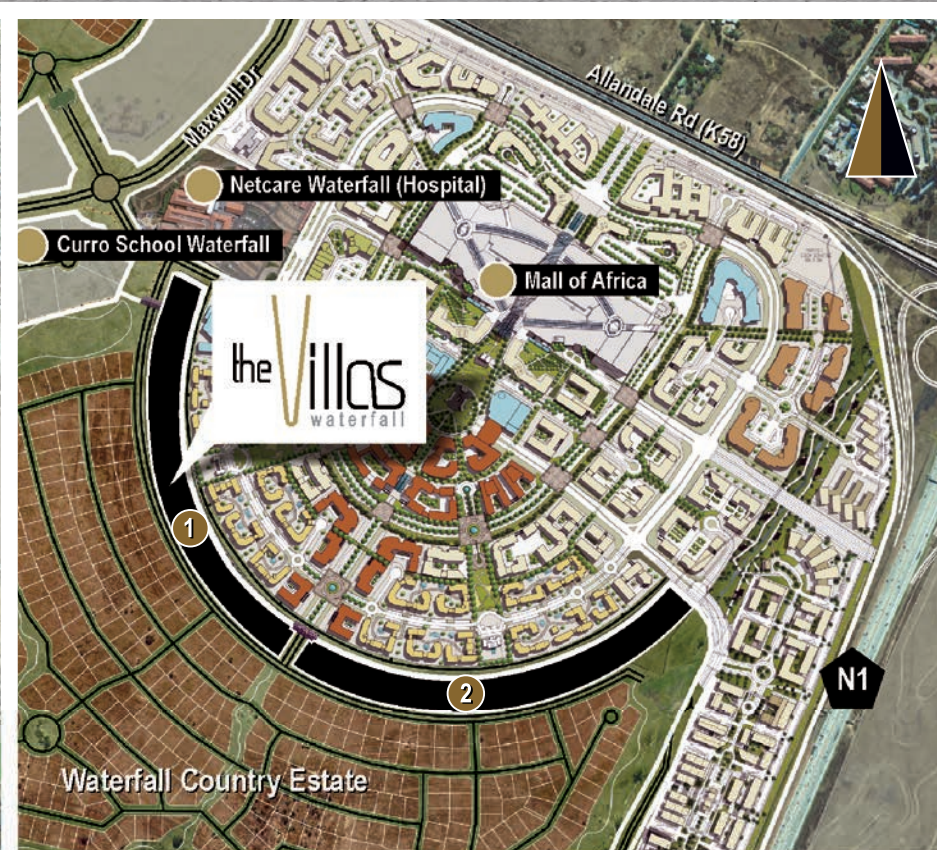
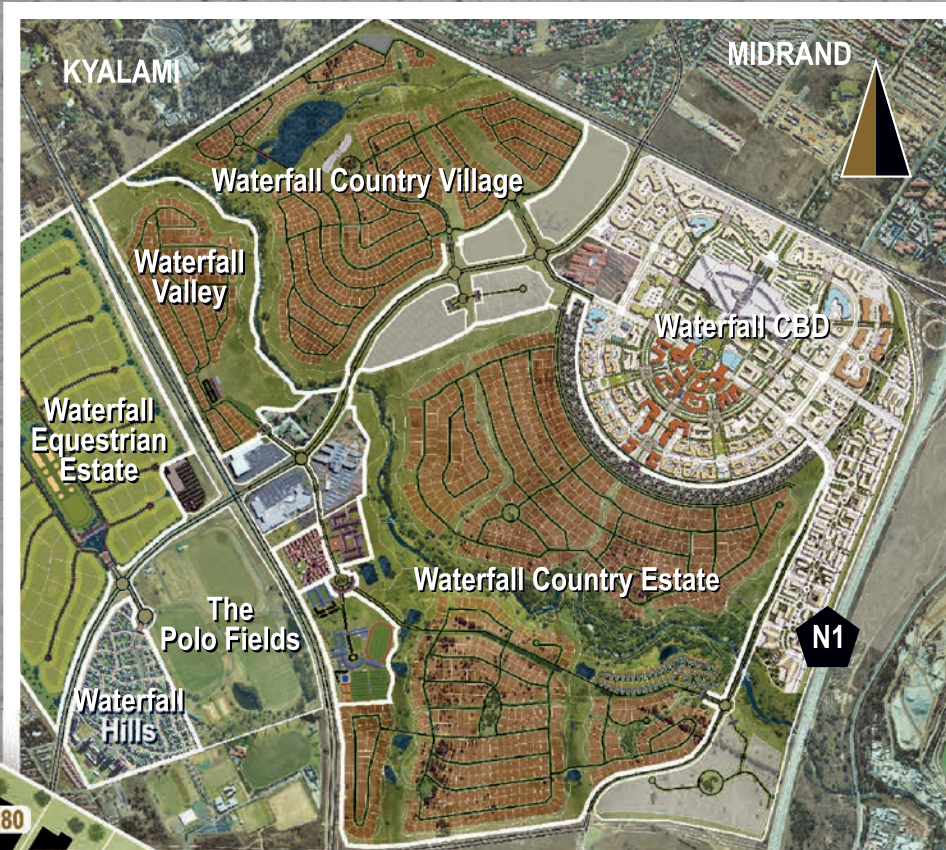
Waterfall has been nicknamed “the land of dreams” and today this development has proven to be worthy of this title due to numerous awards in the international arena. These include the “*Best Mixed-use Development in Africa*”, “*Best Residential Development in Africa*” and “*Best Retirement Resort in the World*” from the CNBC International Property Awards. Within the estates' secure perimeters, residents have access to walking trails, fishing dams, clubhouses, mountain bike tracks, two private schools, modern hospital, two luxurious hotels, numerous retail nodes and two retirement villages.

the **Villas**
waterfall

The Villas Waterfall, is a precinct within the overall Waterfall Estates and enjoys access to all its amenities at a fraction of the cost of renting a typical home within Waterfall Estates. These amenities include:

- A world-class 5000m² **clubhouse** with fully equipped double-storey gym and restaurant.
- **Walking trails** that meander through 300 acres of green belt and indigenous parkland.
- Close proximity to **shopping facilities**, like Waterfall Corner and Mall of Africa.
- Numerous **Private Schools** in the area, two of which are located inside Waterfall Estates.
- The Villas Waterfall was designed to capitalise on the **spectacular views** of the estate.
- **Care-free living** as garden maintenance and all other building maintenance is included.
- Each unit has fibre to the home with **free internet package** (capped to 60GB, 10MB per sec).
- Extremely high levels of security with **biometric fingerprint access**.
- Residents will be renting from a big corporate, with **a professional team** available 24hrs a day.





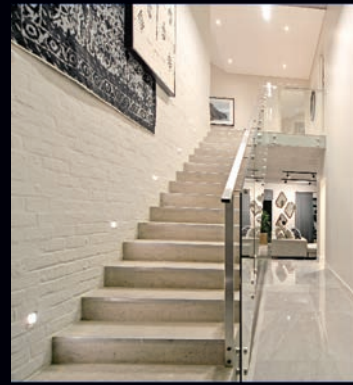
“There is nothing more important than a good, safe, secure home.”
- Rosalynn Carter



the Villas
waterfall

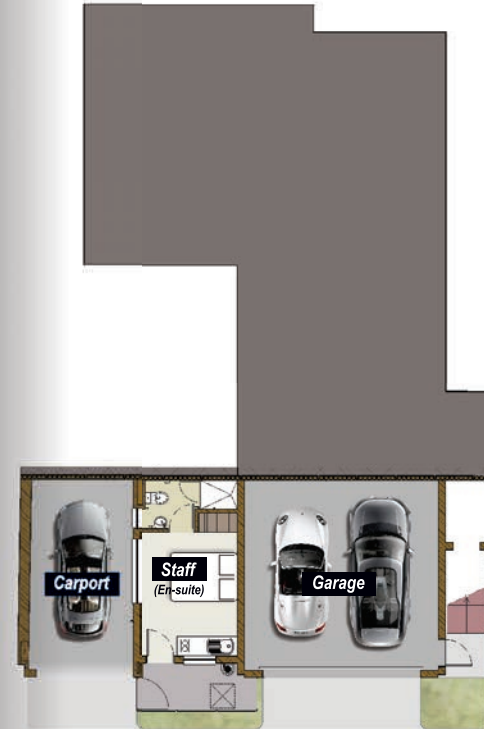
ImageGallery

The interior volumes of The Villas have been designed to accommodate a wide variety of different tastes. The homes have large open areas where kitchen, lounge and dining areas flow seamlessly into one another. Featuring upmarket fittings and finishes, these units are extremely easy to furnish.



Unit Type A1

Lower Ground Floor



Ground Floor



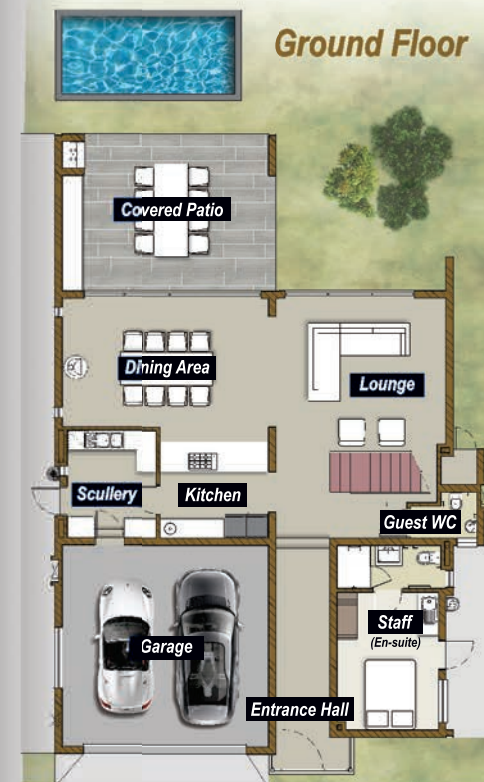
First Floor



4 Bedrooms | 361m² | Staff Acc | Pool | Double Garage | Carport | PJ lounge | Garden

Unit Type B2

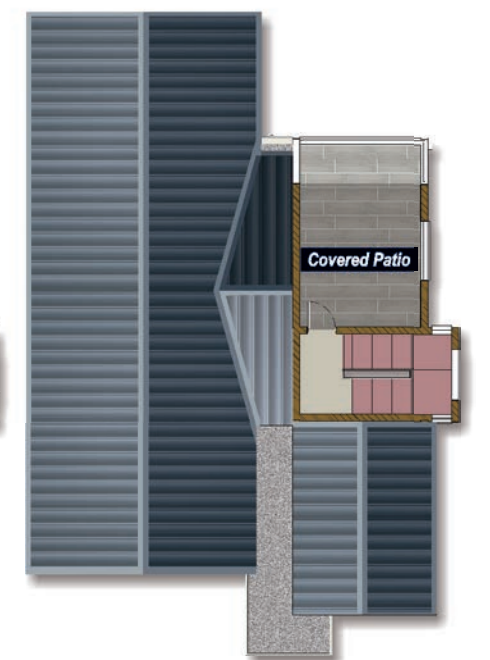
Ground Floor



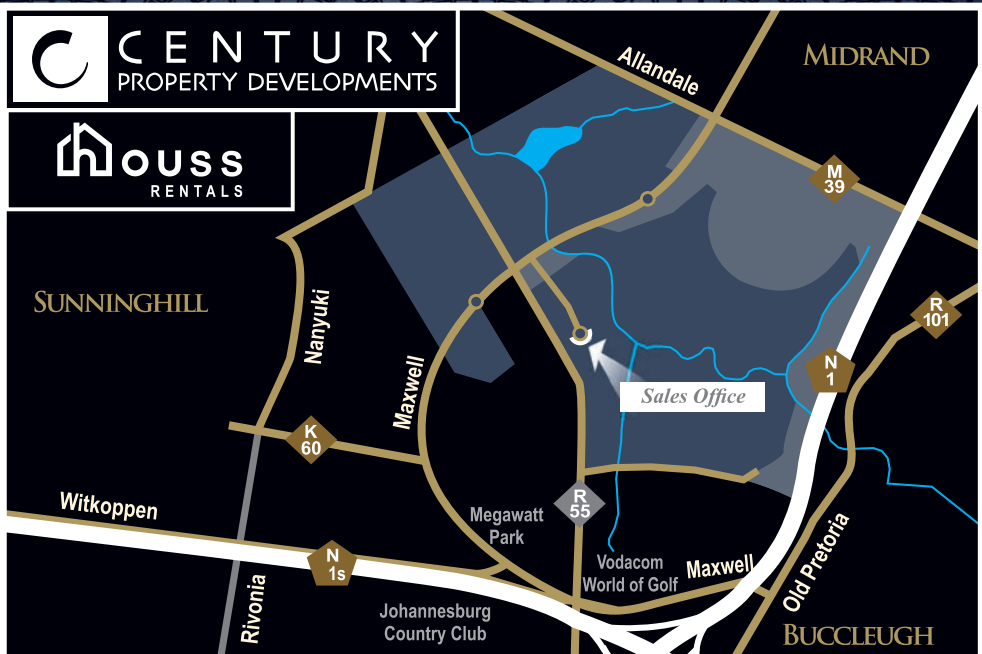
First Floor



Loft



4 Bedrooms | 401m² | Staff Acc | Pool | Double Garage | Loft | PJ lounge | Garden



Georgia
083 644 4323



Keegan
071 177 5114

For more information, please visit
www.century.co.za

Rental office hours:
09h00-17h00, 7 days a week

Other exciting RENTAL projects currently on show:



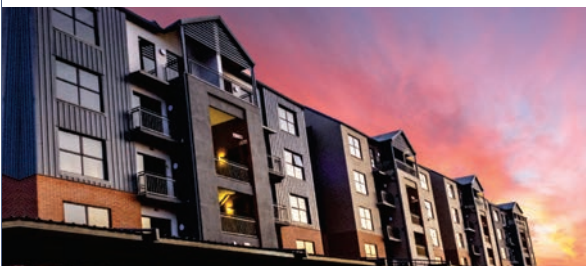
Waterfall Crescent
Georgia: 083 644 4323



The Sheds @ Waterfall
Keegan: 071 177 5114



Rental Houses in Waterfall Estates
Georgia: 083 644 4323



The Precinct Luxury Apartments
Vuyo: 082 371 7613



Carlswald Luxury Apartments
Celia: 066 472 4760



Sagewood Lifestyle Apartments
Shepherd: 079 078 5518

For more information on any of these developments, contact us on **0800 736825**