

Saints 2053 Master Plan



Rector Connect – 12 July 2017

Dr Tim Nuttall



ST STITHIANS
COLLEGE



Saints 2053

- Gazing to our centenary
- Enhancing our educational mission
- Going places, creates a sense of purpose and energy
- Developing a 'big view' – patterns, connections, stories
- Strategic planning, priorities, resource allocation, cash flow
- A sense of place, creating community, fostering belonging, One & All



St Stithians Master Plan – Global Statement

St Stithians College is a proudly South African school, embracing diversity and offering a distinctive educational experience.

Founded in 1953 as a Methodist Church School, our Christian spirituality is central to our identity.



Our College consists of primary and secondary boys' and girls' schools, together with a co-educational junior primary school.



ST STITHIANS
COLLEGE

St Stithians Master Plan – Global Statement

We are an independent, non-profit institution located on an expansive green campus in Sandton, Johannesburg.

In addition, St Stithians incorporates Kamoka Bush School near Modimolle, and the Thandulwazi Maths & Science Academy on our campus.



ST STITHIANS
COLLEGE



Thandulwazi Trust
MATHS AND SCIENCE ACADEMY



KAMOKA
BUSH SCHOOL

St Stithians Master Plan – Global Statement

The Landscape Master Plan celebrates an African Highveld ecology, a sense of arrival, the presence of water, vistas, outdoor spaces, and intersecting campus zones.

The parkland campus landscape creates a natural context for, and adds character to, the school precinct.



St Stithians Master Plan – Global Statement

The Buildings Master Plan creates a built environment which advances the purpose, character and synergies of a St Stithians education – learning which is engaged, holistic and experiential.

The facilities promote welcoming and multi-functional spaces, create features which are both traditional and innovative, and enable a community of best practice.



ST STITHIANS
COLLEGE

INSPIRING EXCELLENCE. MAKING A WORLD OF
DIFFERENCE

Landscape Master Plan 2053

Celebrating our Highveld ecology through an expansive parkland campus in Sandton, Johannesburg



ST SWITHIANS
COLLEGE

Landscape Master Plan 2053

- **Campus Spatial Zones (categorising 105 hectares)**
 - Peter Place Gate and Hurlingham Gate (incorporating Bird Sanctuary)
 - Boys' Prep and Junior Prep (with adjacent grassland)
 - Boys' College (incorporating the courts and adjacent forest and grassland)



Landscape Master Plan 2053

- **Campus Spatial Zones (continued)**

- Sports Zone (incorporating the Astros, Ridgway, Baytopp, Main Oval, Jamieson, Squash Centre, Aquatics Centre, Henning Field, Lower Dam Field)
- Girls' Schools (incorporating the tennis courts)
- Upper Campus (incorporating the dams, Middle Dam Field, Wayne Joubert Field, staff housing, Corlett Gate, One & All Gate; One & All Club, and adjacent grasslands and forest)



Landscape Master Plan 2053

Celebrating our Highveld ecology through an expansive parkland campus in Sandton, Johannesburg



ST SWITHIANS
COLLEGE

Landscape Master Plan 2053

- **Water as a Campus Feature**

- Celebrating a life source, an ecological treasure
- Two dams in Upper campus
- Two main waterways, converging at Peter Place Gate
- Water table
- Peter Place Gate water feature
- Wetlands and filtration
- Storm water



Landscape Master Plan 2053

Celebrating our Highveld ecology through an expansive parkland campus in Sandton, Johannesburg

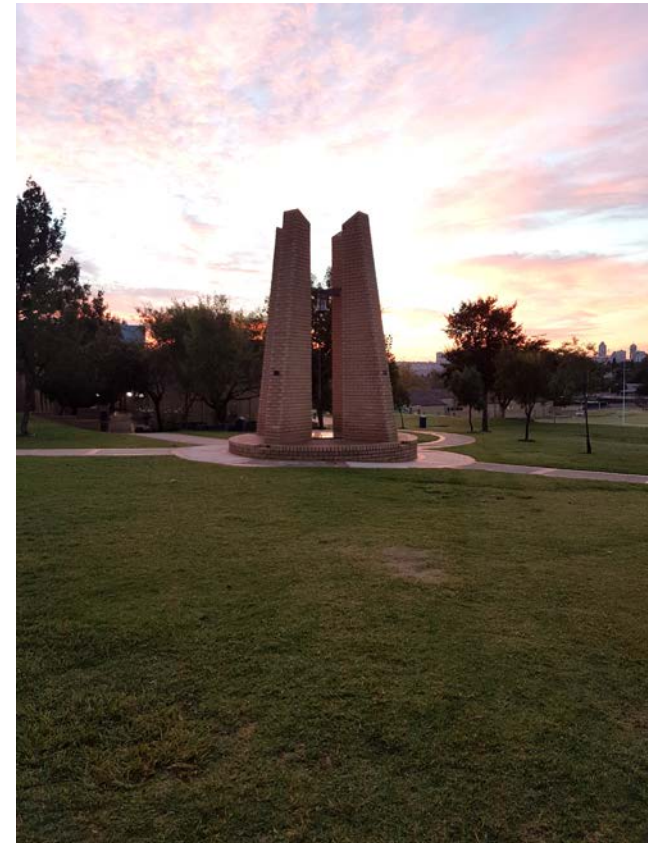


ST SWITHIANS
COLLEGE

Landscape Master Plan 2053

- **Access and Mobility**

- Campus Entrances – welcome to our world
- Ring Road and traffic flow
- Parking – above ground, below ground
- Pedestrianisation:
drop-off areas and walking to school



Landscape Master Plan 2053

Celebrating our Highveld ecology through an expansive parkland campus in Sandton, Johannesburg



ST SWITHIANS
COLLEGE

Landscape Master Plan 2053

- **Vegetation themes**

- Ring Road tree avenues
- Plant palette enhancing the Highveld grassland ecology – indigenous trees, shrubs, garden plants
- Preserving symbolic exotic trees
- School entrances and gardens landscaped – indigenous and exotic

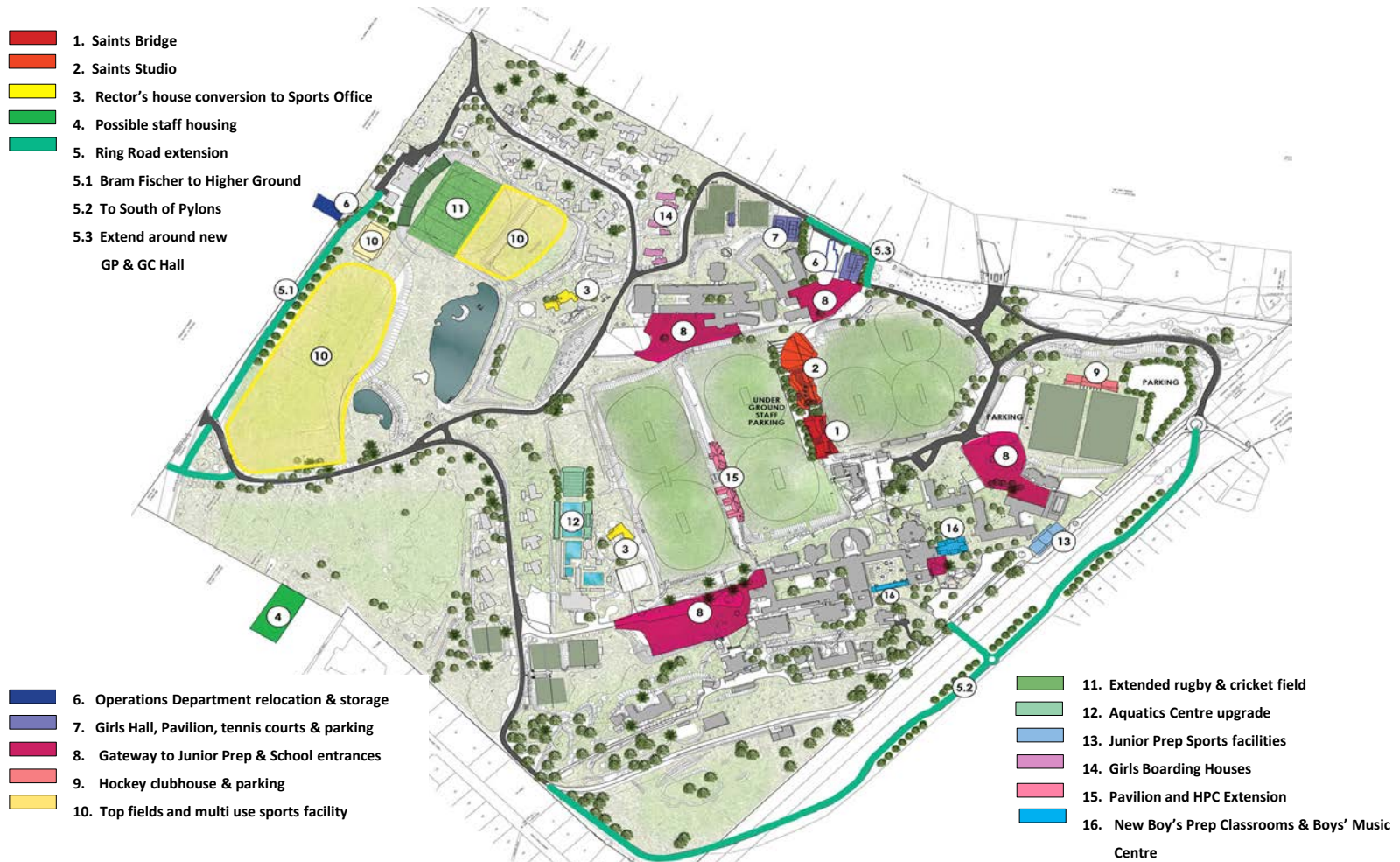


Landscape Master Plan 2053

- **Vegetation themes (continued)**
 - Savannah grasslands and woodlands
 - Nature reserve – flora and fauna
 - Heritage trails and look-outs
 - Walking and cycling
 - Dog-walking (nowhere else on campus)



Built Environment Master Plan 2053



THE SITE PLAN – MASTERPLAN – FEBRUARY 2015



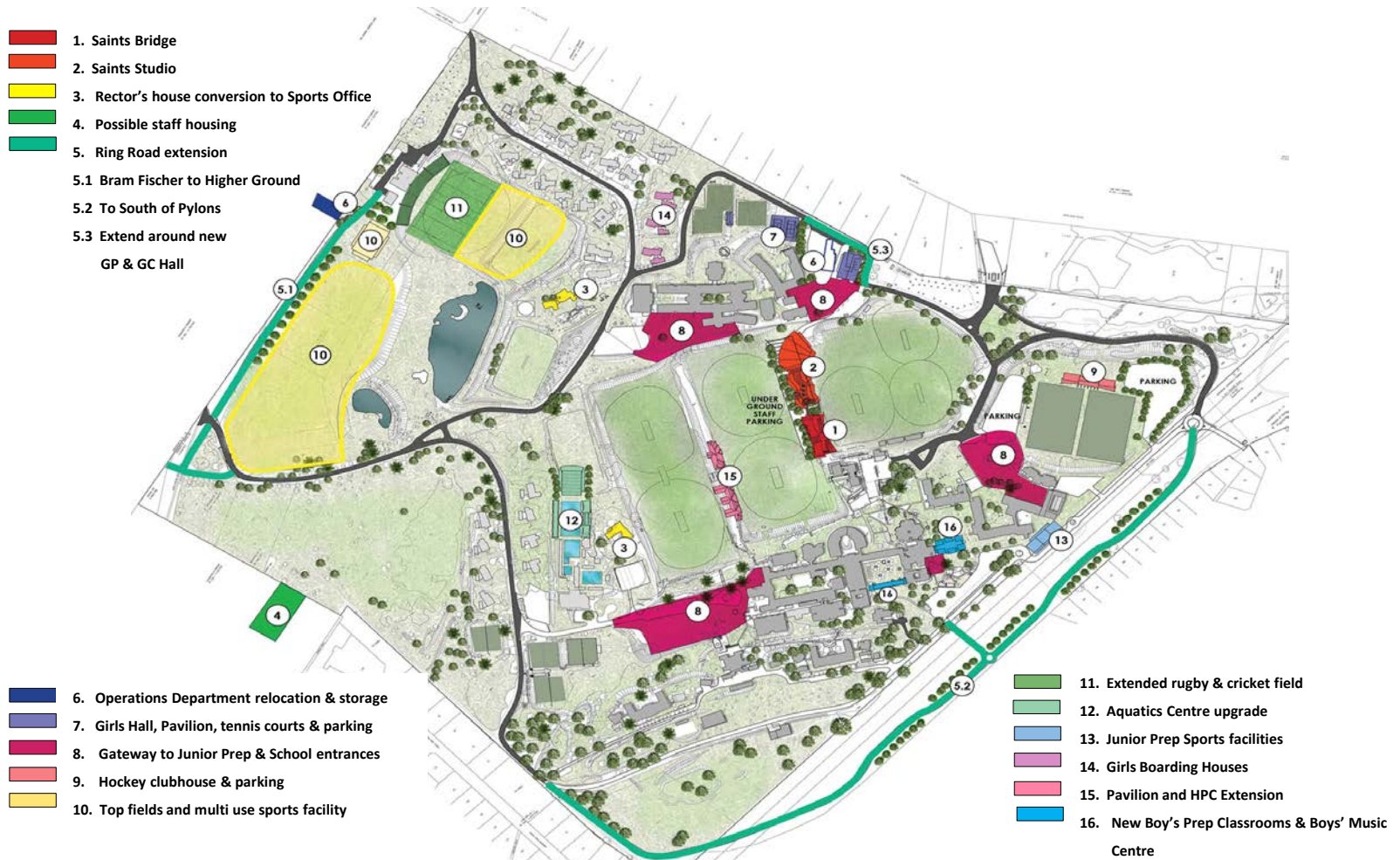
ST SWITHIANS
COLLEGE

Built Environment Master Plan 2053

- The gateway of the Junior Preparatory
- Creating the H Campus, connecting the two school precincts
 - Saints Studio (Performing Arts Centre)
 - Saints Bridge, Saints Boulevard



Built Environment Master Plan 2053



THE SITE PLAN – MASTERPLAN – FEBRUARY 2015



ST SWITHIANS
COLLEGE

Built Environment Master Plan 2053

- Saints Studio
 - Large foyer – exhibition spaces
 - Theatre (scope to be defined)
 - Multifunctional performance space
 - Dance
 - Film
 - Music – central facilities, linking to satellite music centres in schools
 - Debating chamber



Built Environment Master Plan 2053

- Inaugural meeting, Saints Studio, 7 July 2017



ST STITHIANS
COLLEGE

Built Environment Master Plan 2053

- Saints Bridge, Boulevard
 - Eateries
 - Spaces for social interaction
 - Seminar rooms, learning nodes
 - Connector, synergy flow

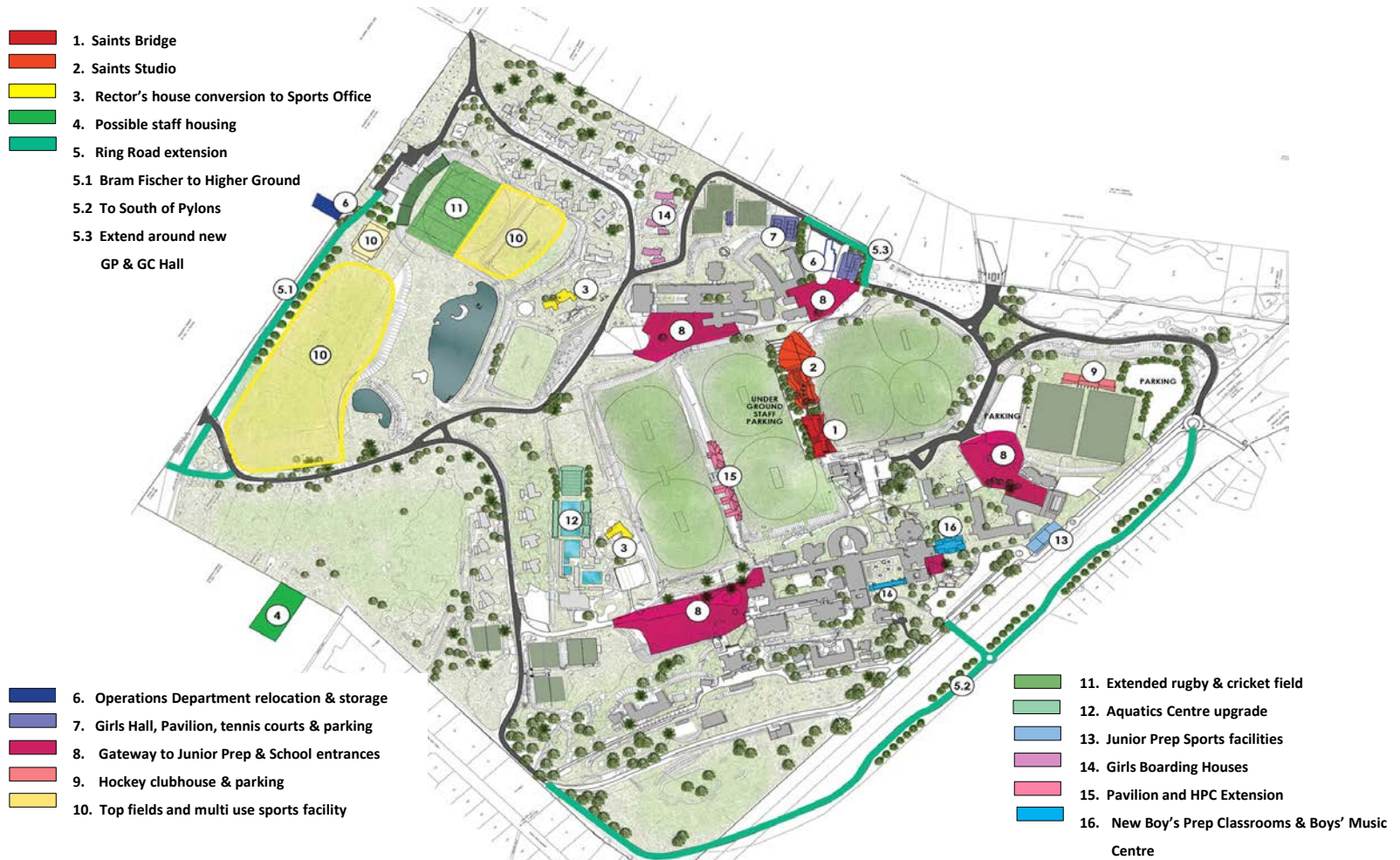


Built Environment Master Plan 2053

- Two strategic questions (Strategy 2025)
 1. Pre-Primary School (Grades RRR and RR)
 2. Girls' Boarding
 - Scoping both these projects
 - Not yet approved at Council level, but conversations are beginning
 - Both need educational vision, facilities plan, business plan



Built Environment Master Plan 2053



THE SITE PLAN – MASTERPLAN – FEBRUARY 2015



ST SWITHIANS
COLLEGE

Built Environment Master Plan 2053

- Staff Housing
 - Competitive advantage, key resource
 - Some options on campus
 - Viable options in Saints neighbourhood



Built Environment Master Plan 2053

- School Entrances:

Welcome



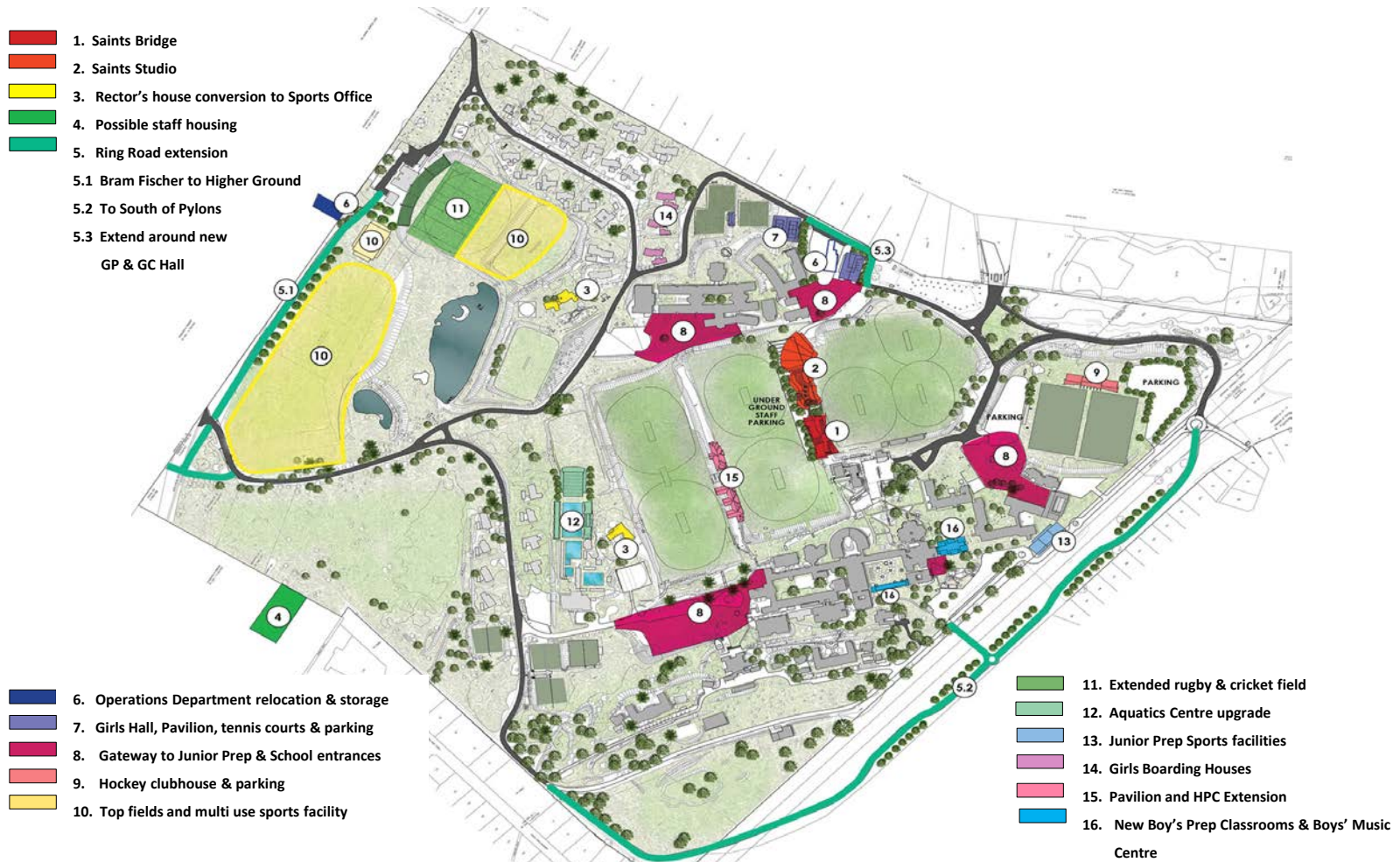
ST STITHIANS
COLLEGE

Built Environment Master Plan 2053

- Sports Facilities
 - Hockey Clubhouse
 - Squash Centre
 - Aquatics Centre (main & preparatory)
 - Upper campus sports zone



Built Environment Master Plan 2053



THE SITE PLAN – MASTERPLAN – FEBRUARY 2015



ST SWITHIANS
COLLEGE

Built Environment Master Plan 2053

- School Sub-Master Plans (landscape & built)
 - Each school is own special character within a campus aesthetic
 - Classroom modernisation: multi-purpose, technology enhancing, light and open, small spaces, larger spaces



Financing 2053

- 10-15 Year Plans
 - Currently, Facilities 2015-2030
 - Annual Capex
 - Large projects and financial models
 - Legacy donations and a community of belonging



Conclusion

